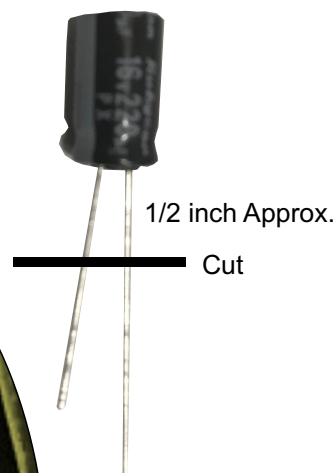
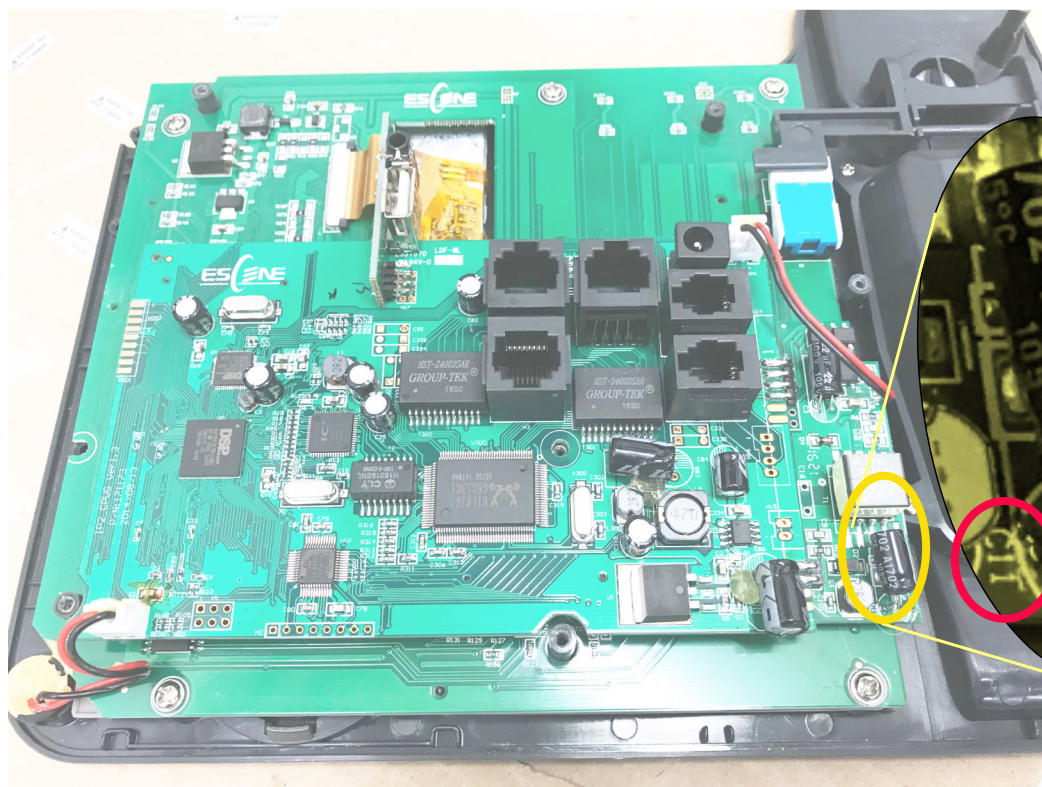


Capacitor at C11 replacement - Requires 16volt 220 UF Capacitor

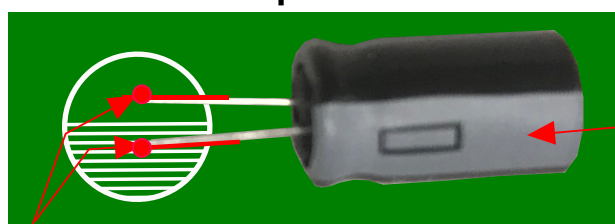
1. Remove plastic rear cover. Plastic light pipe on upper right will come out. be sure to replace it when re-assembling the case.
2. Locate C11.
3. Cut leads close to the capacitor to leave the long tails protruding from the board. You will solder the new capacitor to the leads.
4. The polarity needs to be correct. The silver strip on the side of the capacitor needs to line up with the white silk screened lines on the board.
5. Trim leads on capacitor to about 1/2 inch
6. Solder new capacitor on the protruding leads. 400 degrees Celcius.
7. Bend the new capacitor out away from the board.



Cut leads leaving as much lead as possible still soldered to the board.

Bend the capacitor away from the board.

Correct polarization



Existing leads

Stripe indicating polarity

